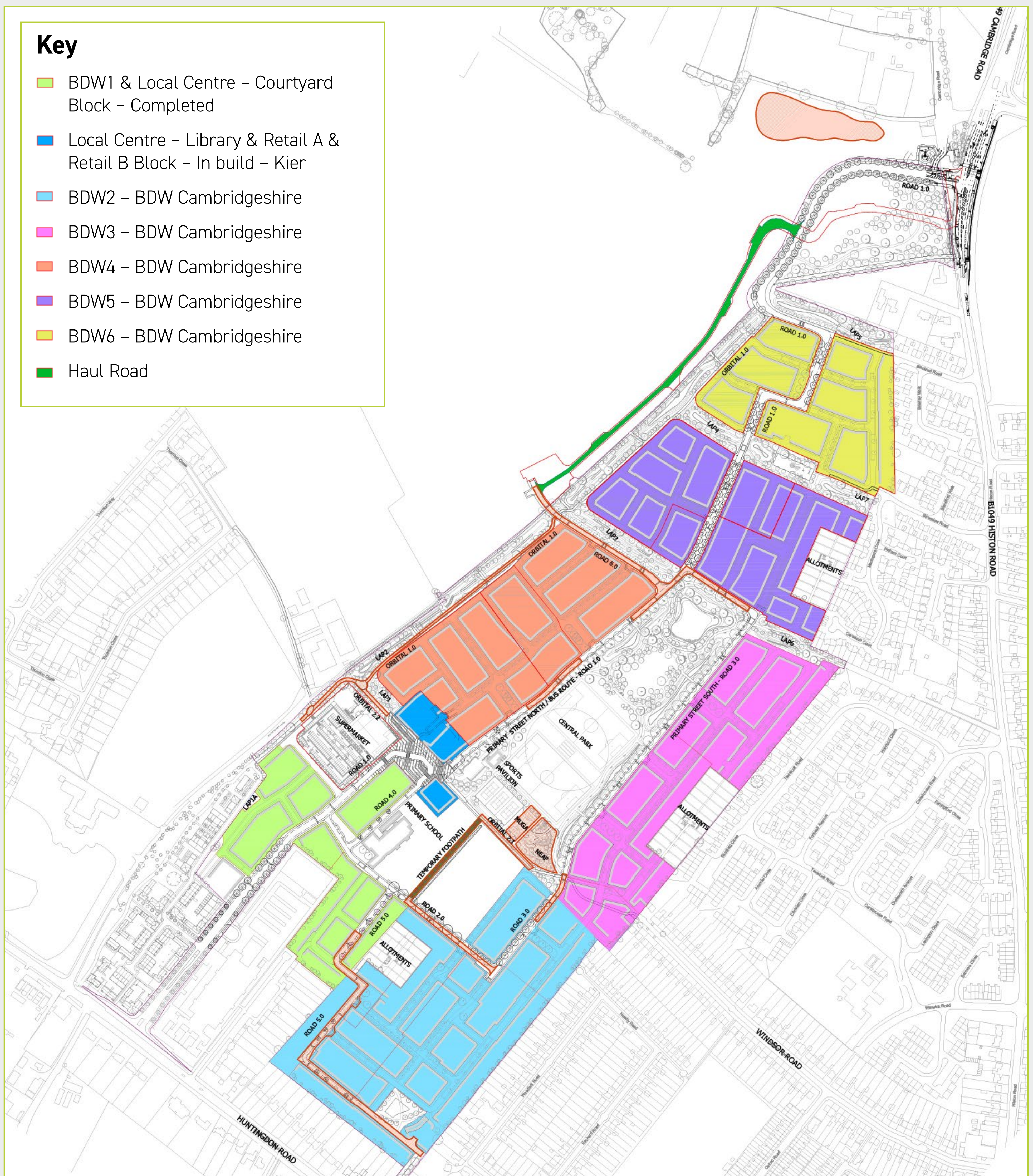
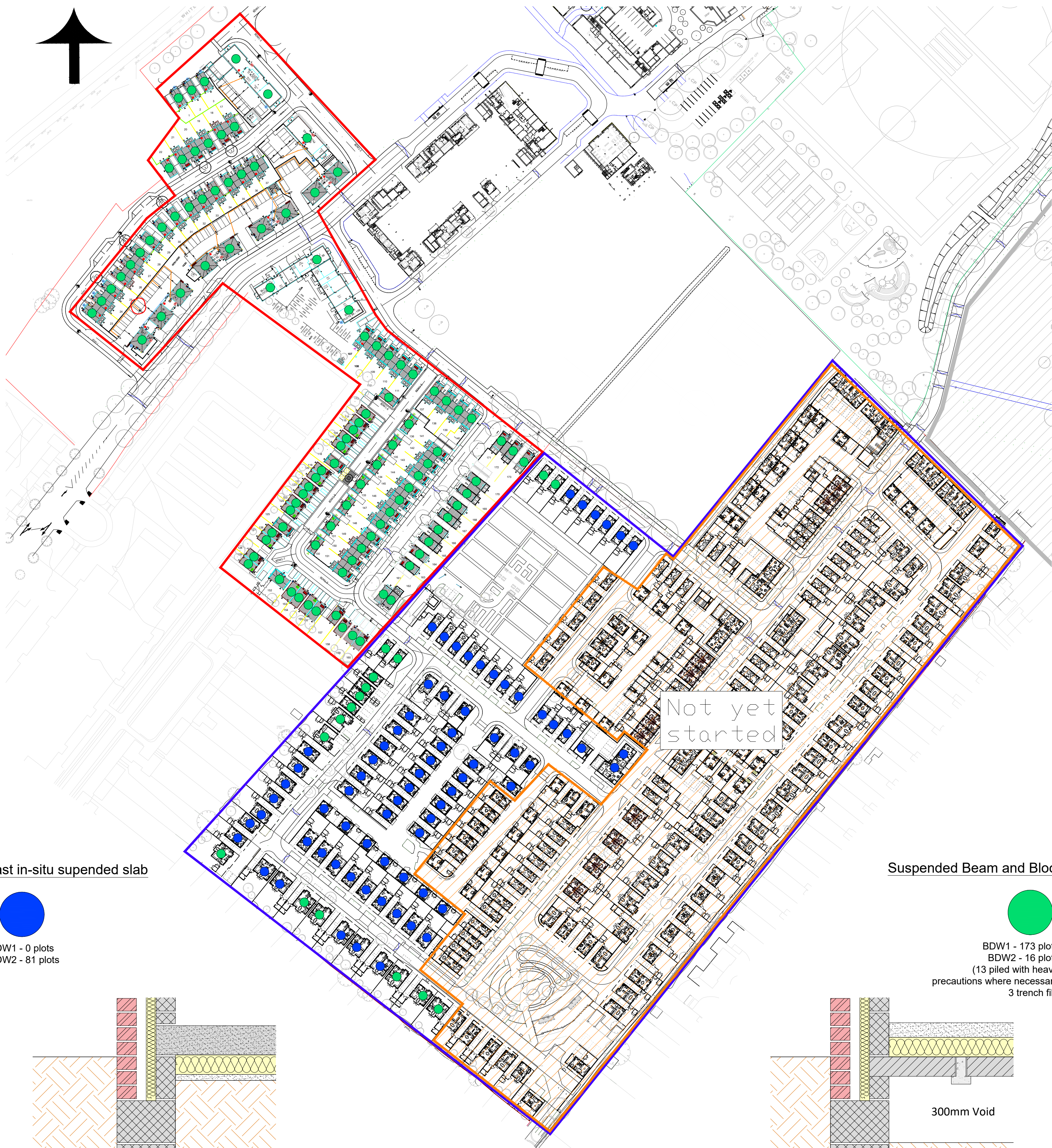


Darwin Green 1

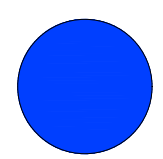
Phasing



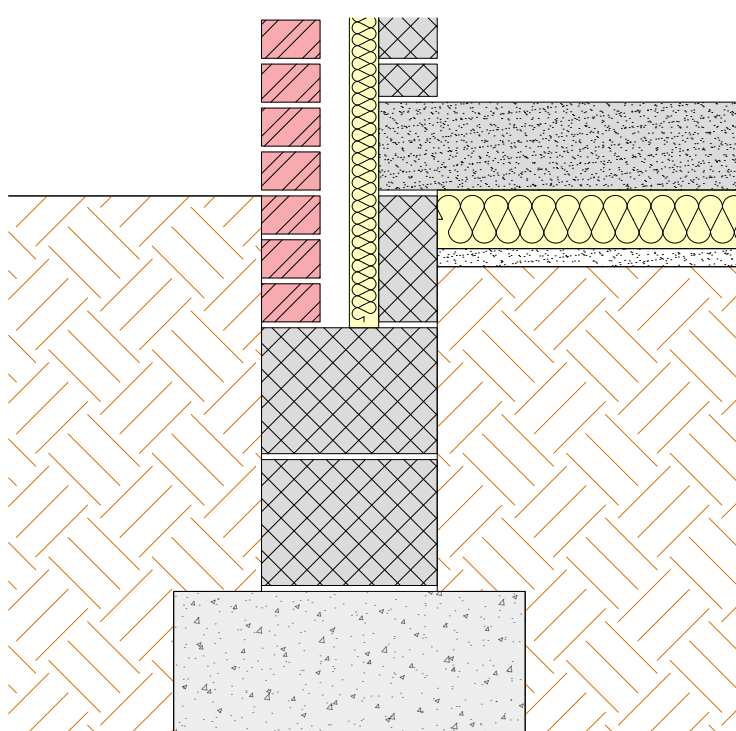
BDW1 and BDW2 Foundations



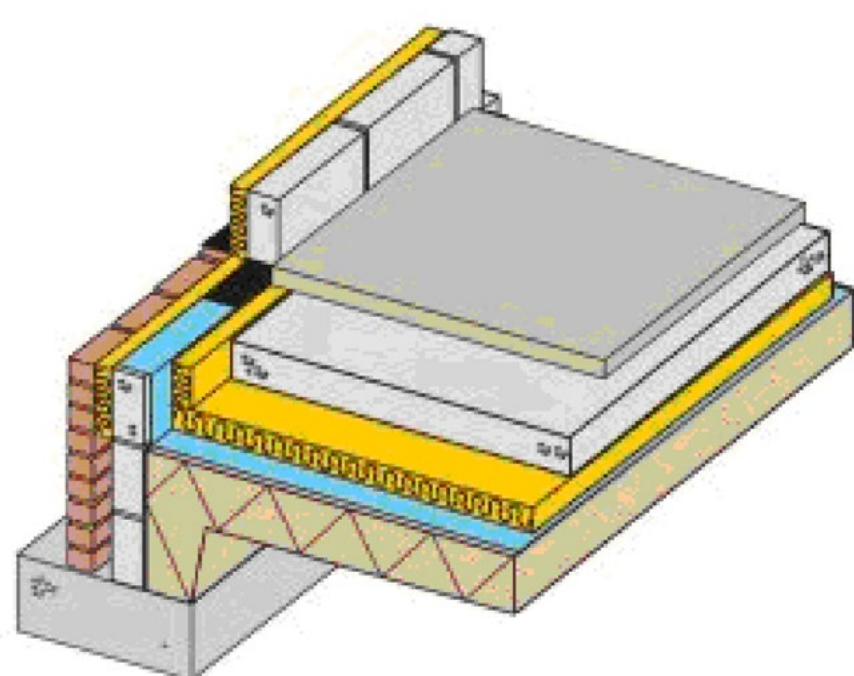
Cast in-situ suspended slab



BDW1 - 0 plots
BDW2 - 81 plots

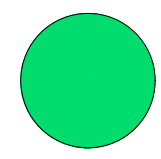


Section through Cast in-situ
suspended slab

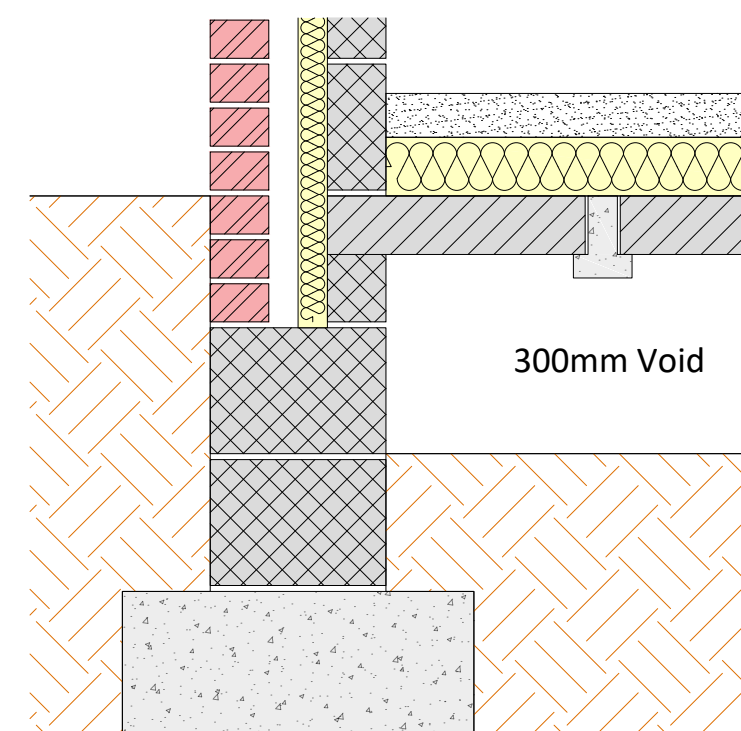


3D visual of Cast in-situ suspended
slab

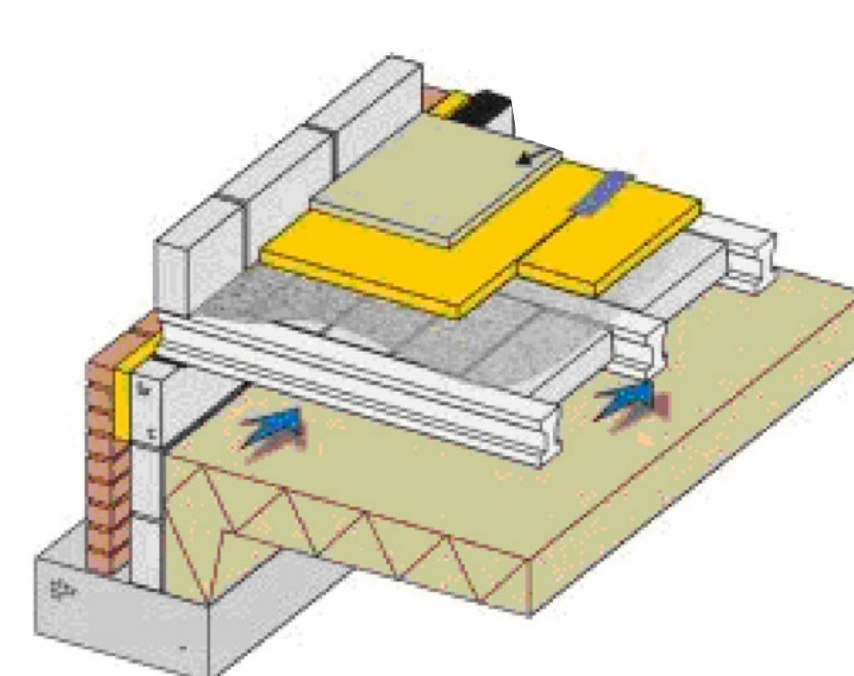
Suspended Beam and Block



BDW1 - 173 plots
BDW2 - 16 plots
(13 piled with heave
precautions where necessary
3 trench fill)



Section through Beam and block
suspended slab



3D visual of Beam and block
suspended slab

Financial benefits of Darwin Green

Total Section 106 contributions for
Darwin Green: **£40,182,534.03**

Primary School
payment
£10,258,637.39



Bus services support
payment **£1,193,553.76**



Off-site indoor sports facility
contribution payment
£1,200,945.21



Swimming facility off-site
contribution payment
£299,146.12



Bus and cycling
priority payment
£378,995.43



Recycling centre
payment
£747,458.88



Secondary School
contribution payment
£11,148,338.61



Northern Corridor Area
Transport Plan off-site
contribution payment
£5,354,740.86



Community benefits of Darwin Green

Darwin Green will provide benefits to the local community which include some of the following.



 Community café


 Library


 Health centre


 3 allotments


 Sports pavilion


 Multi-use games area

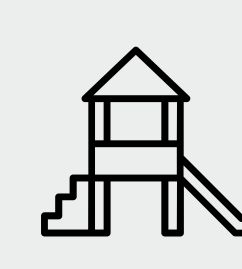

 Combined football and cricket pitch


 3 tennis courts


 7 local areas of play


 1 neighbourhood equipped area of play


 1 trim trail


 1 super local equipped area of play


 Central Park
